



FCS-4044 Version: 1

PTZ Dome Network Camera, 5-Megapixel, PoE 802.3af, Outdoor, Day & Night, 10x

Key Features

- 5-Megapixel (2592 x 1944) high-definition resolution
- Weatherproof IP66-rated with wide operating temperature (-20°C to 50°C) for harsh environments
- Features WDR (Wide Dynamic Range) to enhance visibility under extremely bright or dark environments
- Supports 350° pan, 180° tilt and 10x optical zoom
- Compression: H.264/MJPEG
- Removable IR-cut filter for day and night surveillance
- Built-in Micro SD/SDHC card slot for local storage
- Dual power support: 12VDC/PoE (IEEE 802.3af)
- Free 64-channel monitoring software included (supports OneSecure App)



Specifications

System Specifications

Image Sensor:

5-Megapixel 1/3.2" Progressive Scan CMOS

Connectors and Cabling:

1 x RJ-45 10/100 Mbps PoE port

1 x Line In

1 x Line Out

1 x Power terminal block

I/O terminal block (1 DI/1 DO)

Modularity:

1 x MicroSDHC/ MicroSDXC card slot

Button:

Reset Button

Indicator:

Power

Lens:

Zoom, DC iris, Auto focus, f4.9-49mm, F1.8-3.0

IR Cut Filter:

Removable infrared-cut filter for day & night function

Shutter Time:

1/5 ~ 1/10,000 sec

Angle of View:

49.69 - 5.83°

Pan/Tilt/Zoom:

Pan range: -175° - 175° (without auto-flip)

Tilt range: 0° ~ 180° (with E-flip)

10x Optical Zoom

Video Compression:

H.264 High Profile / MJPEG

Resolution:

5M (2592x1944)

Video Format:

RAW

Audio Compression:

G.711

Power:

Power Consumption: PoE Class 3 (IEEE802.3af) / 12.95 W (built-in heater and fan on), DC 12V (adapter not included) / 10.36 W (built-in heater and fan on)

Power Input: DC12V / 802.3af PoE

Standards & Protocols:

IEEE 802.3 10-BASE-T, Ethernet

IEEE 802.3u 100-BASE-TX, Fast Ethernet

IEEE 802.3af Power over Ethernet (PoE)

TCP, UDP, HTTP, HTTPS, DHCP, PPPoE, RTP, RTSP, IPv6, DNS, DDNS, NTP, ICMP, ARP, IGMP,

SMTP, FTP, UPnP, SNMP, Bonjour

Features

General:

Backup: MicroSDHC /MicroSDXC card slot for local storage

Video:

Image Setting: - Adjustable image size, quality and bit rate

- Configurable brightness, sharpness, contrast, saturation, white balance and exposure

- ACG/AWB/AES

- Back Light Compensation (BLC)

- Wide Dynamic Range (WDR), Basic WDR (74 dB)

- 2D Noise Reduction (2DNR)

Audio:

Streaming: 2-way audio

Input/Output: line input, line output

Performance

Data Transfer Rate:

10/100Mbps

Frame Rate:

15 fps at 2592 x 1944; 15 fps at 2048 x 1536; 30 fps at 1920 x 1080; 30 fps at 1280 x 720; 30 fps at 640 x 480; 15 fps at 320 x 240

Minimum illumination:

Color: 0.1 lux at F1.8

B/W: 0.05 lux at F1.8

Environment

Temperature (°C):

Operating: -20°C ~ 50°C

Humidity (Non-condensing):

Operating: 10% ~ 85%

Physical Specifications

Dimensions (W x D x H mm):

153 x 116 x 153 mm

Weight (g):

1263 g

Enclosure:

Weather proof IP67-rated housing

Others

Approval and Compliance:

CE, FCC, ONVIF, IP67, NEMA 4X

Deployment:

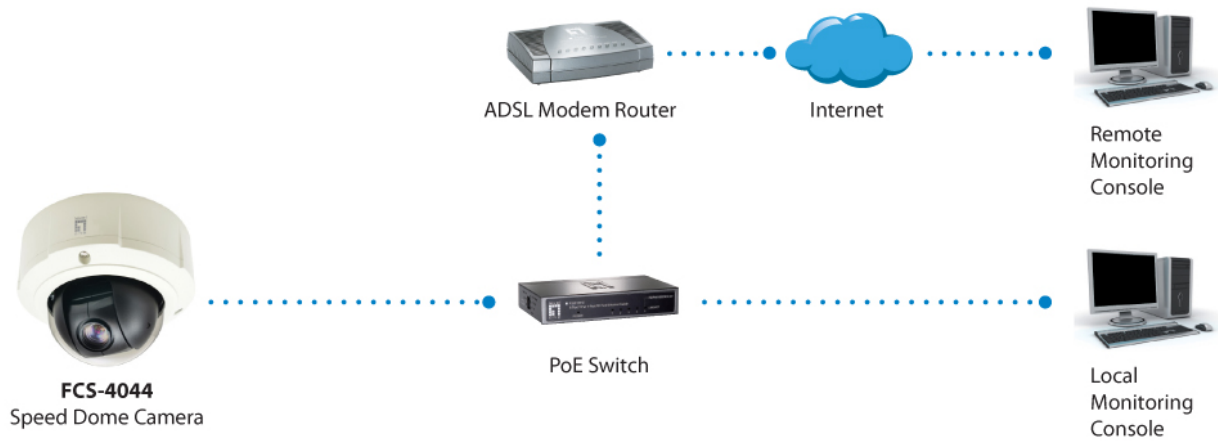
Wall/Ceiling Mount

Operation Systems:

Microsoft Windows 8/7/Vista/XP



Diagram



Order Information

FCS-4044

Package Contents

Mounting Kit
Screw Kit
Quick Installation Guide
Resource CD (User Manual, Utility, QIG)

No liability or responsibility for any errors or omissions in the content.
Specifications are subject to change without notice.

All mentioned brand names are registered trademarks and property of their owners.
Copyright © Digital Data Communications GmbH, Germany. All Rights Reserved.