



## Switch Gigabit de 26 puertos, 2 x SFP

### Easily boost your networking throughput

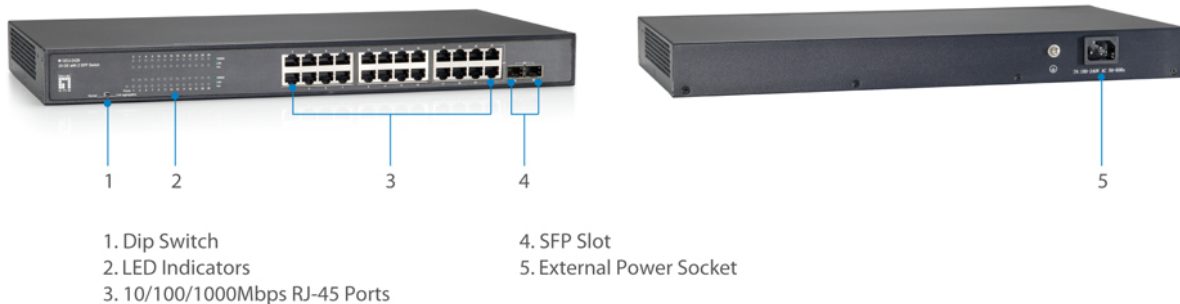
The GEU-2429 24 Gigabit ports that lead you to a real Gigabit connection. Users are now able to transfer large and high bandwidth-needed files faster and hence get a real efficiency improvement. In addition to the cooper ports, 2 of those ports support fiber connection with the equipped SFP ports for obtaining long-distance communication.

### Offers users with fast and reliable network

The store-and-forward architecture filters errors and forwards packets in a non-blocking environment. Flow control ensures the correctness of data transmitting. The 802.3x and backpressure flow control mechanisms work respectively for full and half duplex modes.

### Easy installation and maintenance

It supports Nway auto-negotiation protocol that detects the networking speed (10/100/1000 Mbps) and the duplex modes (Full/Half ) automatically. Auto-MDI/MDI-X function alleviates the effort to use crossover cables. Also, rich diagnostic LEDs are provided for users to get real-time information of the connection status.



## Key Features

- 24 puertos Ethernet Gigabit y 2 ranuras SFP Gigabit
- 
- 9000 marcos jumbo para aumentar las velocidades de transferencia de datos
- Transmisión y recepción a 10/100/1000 Mbps a velocidad de cable
- Admite aprendizaje automático y envejecimiento automático de 8000 direcciones MAC
- El control de flujo IEEE 802.3x evita la pérdida de paquetes para mejorar la fiabilidad de la transmisión de datos
- Minimice la huella de carbono gracias a la tecnología avanzada de uso eficiente de la electricidad (IEEE 802.3az)
- Función troncal estática para la agregación de puertos



## Works With



### **GVT-0300**

Transceptor SFP multimodo de 1,25Gbps, 550m, 850nm



### **GVT-0301**

Transceptor SFP de un modo y 1.25Gbps, 10km, 1310nm



### **GVT-0302**

Transceptor SFP de un modo y 1.25Gbps, 80km, 1550nm

---

## Specifications

### System Specifications

#### Estándares:

IEEE802.3(10BASE-T),  
IEEE802.3u(100BASE-T),  
IEEE802.3ab(1000BASE-T),  
IEEE802.3az Energy Efficient Ethernet

#### Memoria:

16Mbit

#### Buffer de Memoria:

4.1Mbit

#### Puerto:

24 x RJ45 10/100/1000Mbps  
2 x 1000BASE-X SFP slots

#### Indicador:

Power, LINK/ACT,1000M

#### Método de transmisión:

Store- forward

#### Entrada de alimentación:

12V/2A

#### Plano posterior (Gbps):

52Gbps

#### Tabla de direcciones MAC:

8K

#### Velocidad de datos:

1488000pps

#### Ahorro de energía:

YES

#### Temperatura de funcionamiento (° C):

0-40°C

Humedad de funcionamiento:

10%~90%

## Features

General:

Static trunk function for port aggregation (trunk port: 23-26 )

## Performance

Jumbo Frame (K):

9KB

## Physical Specifications

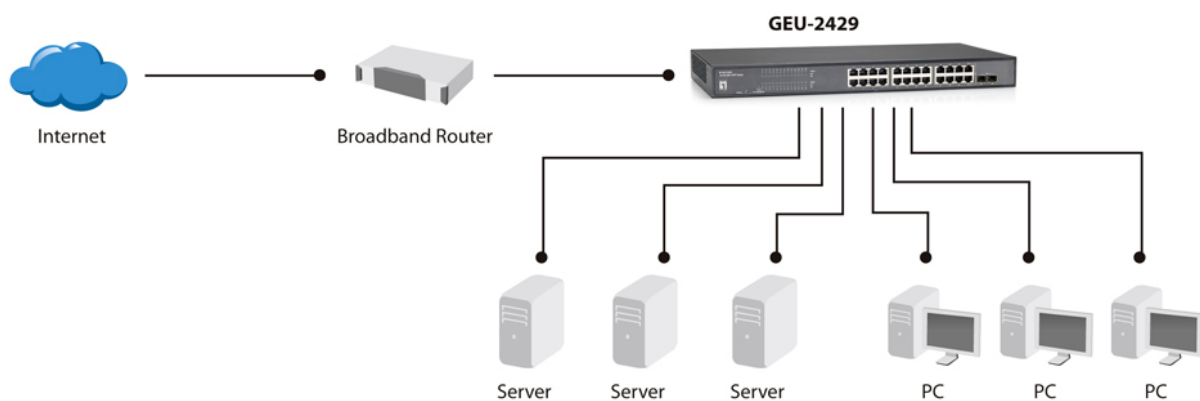
Dimensiones (W x D x H mm):

440x220x44mm

Peso (gramos):

2kg

## Diagrama



## Order Information

GEU-2429

## Package Contents

GEU-2429

Power Cord

19" Rack Mount Kit

Quick Installation Guide

No liability or responsibility for any errors or omissions in the content.  
Specifications are subject to change without notice.  
All mentioned brand names are registered trademarks and property of their owners.  
Copyright © Digital Data Communications GmbH, Germany. All Rights Reserved.